

EZ CHAT BT HEADSET

QUICK START GUIDE

System Requirement :

1. Computer A : PC / Laptop
2. A Bluetooth device (Bluetooth Dongle)
3. Widows 2000 or Windows XP
4. Widcomm BTW
5. Bluetooth Headset " Bluemate "

Step 1 :

Insert provided CD-Ron and run setup.exe

Step 2 :

Follow the on screen instruction to install Widcomm BTW software into Computer A.

Step 3 :

Plug the Bluetooth USB Dongle V1.2 into Computer A.

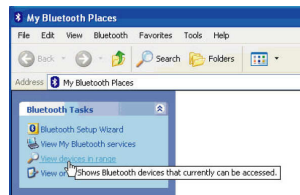
Step 4 :

Click to open " My Bluetooth Places " on Computer A ; or click the mouse's right button on the " B " icon at the lower right corner of the desktop, then select " Explore My Bluetooth Places. "



Step 5 :

It begins searching Bluetooth devices.



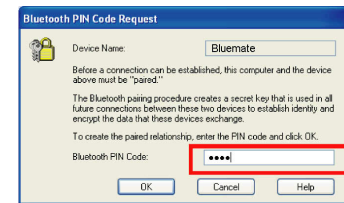
Step 6 :

Turn on Headset " Bluemate " in pairing mode so that it can be searched from Computer A.



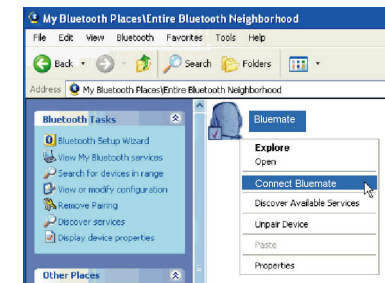
Step 7 :

To pair the Headset " Bluemate " please entry passkey " 1234 " in the Bluetooth PIN Code dialogue.



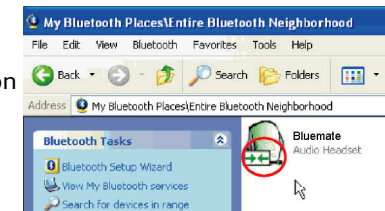
Step 8 :

Right-click the " Bluemate " icon then select " Connect Bluemate " .



Step 9 :

The " Bluemate " icon shows a connected sign, then press the main button of headset again, now you can proceed wireless audio transmission via EZ CHAT BLUETOOTH HEADSET.



Chat with SKYPE via EZ CHAT BT Headset as a voice input/ output device :

Open SKYPE programe, select Tools > Sound Devices , then set your "Audio in" and "Audio out" device as "Bluetooth Audio"

